

KAREN



Karen is a top down stile sweater, knit as a jacquard with three colors of our Pura Lana Ecologica yarn, young, versatile and comfortable, in perfect harmony with nature.



GAUGE

17 stitches and 22 rows = 10 X10 cm in **stocking st.** with needles 5.5 mm.
Adjust the needles size if it's needed to achieve the correct gauge.

SIZES

S (M,L, XL)

ABBREVIATIONS

st(s)= stitch(es);

Yarn: "Pura Lana Ecologica " 50 gr/ 85 m

Main Color: 9 (10, 12) balls (MC = cream, cod: 53)

Contrasting Color 1: 2 (2, 3) balls (CC1 = , cod: 606)

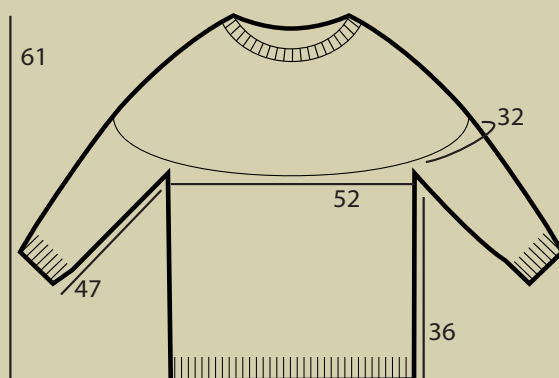
Contrasting Color 2: 1 (1, 2) balls (CC2 = , cod: 1640)

Circular Needles: 4.5 and 5.5 mm (cables 100 cm and 60 cm for sleeves)

Stitches: Stocking stitch;

2/2 rib st: All rounds: * K2, P2 * rep ** to the end.

Other: stitch markers, tapestry needle.



KAREN



SM= stitch marker;
SMB= stitch marker of the beginning of the round;
sSM= slip SM;
K = knit;
P = purl;
K2tog = knit 2 sts together;
SKP= slip 1, K1, pass slipped stitch over;
m1 = make one by picking up one a loop between two stitches and knitting into the back of the new stitch.
MC = main color; CC1 = contrasting color 1 ; CC2= contrasting color 2 ;
rep **= repeat from * to *

INSTRUCTIONS

YOKE

With needles 4.5 mm and CC1 cast on 88 (92, 100), insert the marker to mark beginning of row, SMB, and start to work in the round ensuring that the work is not twisted.

Rounds 1 - 10: * K2, P2 * rep ** to the end.

Change to needles 5.5 mm

Rounds 11 - 13: K all sts with CC1

Round 14: K and increase evenly 62 (68, 70) sts (= m1). [150 (160, 170) sts]

Round 15 - 18: K all sts with CC1

Follow CHART A from right to left (35 rounds)

Sts after Chart: 210 (224, 238) sts

Work with MC

Knit 1 round

Knit and increase evenly 54 (56, 70) sts (m1) [264 (280, 308) sts]

Knit 1 (3, 6) rounds

Place the sts for each sleeve onto holder or scrap yarn:

Place the first 52 (54, 60) sts onto holder or scrap



KAREN



yarn (first sleeve), cast on 4 (4, 4) underarm sts, K 80 (86, 94) (front), place 52 (54, 60) sts onto holder or scrap yarn (second sleeve), cast on 4 (4, 4) underarm sts , K 80 (86, 94)(back).

Body sts: 168 (180, 196)

Body

Work with MC in **stocking st** until sweater measures about 32 (33, 34) cm from underarm.

Hem

Work 10 rounds **2/2 rib st: * K2, P2 * rep ** to the end.**

Cast off all sts

SLEEVES

Slip the 52 (54, 60) held stitches from holder to 5.5 mm needles.

With MC pick up and knit 4(4, 4) underarm sts. Place the SM in the center of the underarm sts and start working in the round.

Stitches: 56 (58, 64)

Knit 33 (35, 35) rounds

Decrease round: K1, K2tog, K to 3 sts before end, SKP, K1. (2 sts decreased)

Knit 7 rounds

Decrease round: K1, K2tog, K to 3 sts before end, SKP, K1. (2 sts decreased)

Knit 7 rounds

Decrease round: K1, K2tog, K to 3 sts before end, SKP, K1. (2 sts decreased)

Knit 7 rounds

Decrease round: K1, K2tog, K to 3 sts before end, SKP, K1. (2 sts decreased)

Knit 7 rounds

Decrease round: K1, K2tog, K to 3 sts before end, SKP, K1. (2 sts decreased)

Knit 7 rounds

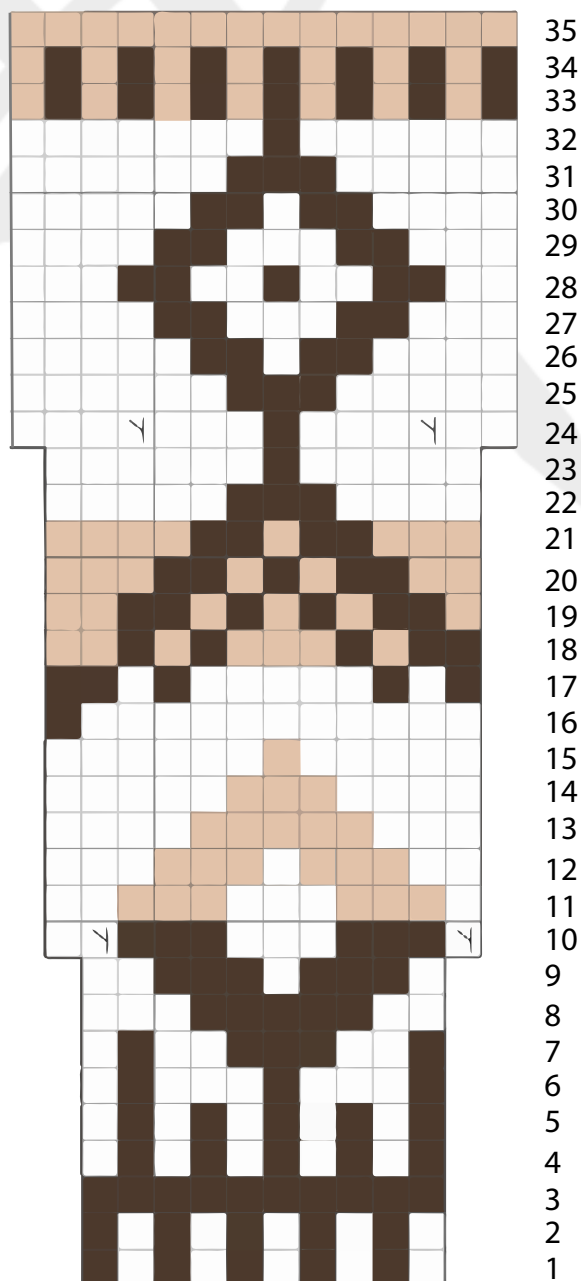
Decrease round: K1, K2tog, K to 3 sts before end, SKP, K1. (2 sts decreased)



KAREN



CHART



35
34
33
32
31
30
29
28
27
26
25
24
23
22
21
20
19
18
17
16
15
14
13
12
11
10
9
8
7
6
5
4
3
2
1

Knit 7 rounds

Decrease round: K1, K2tog, K to 3 sts before end, SKP, K1. (2 sts decreased)

Knit 5 rounds

42 (44, 50) sts

Only for size S and L:

Decrease round: K1, K2tog, K to 3 sts before end, SKP, K1. (2 sts decreased)

40 (44, 48) sts

Cuff

Change to needles 4.5 mm

Work 12 rounds **2/2 rib st: * K2, P2 * rep ** to the end.**

Cast off all sts

Weave in all ends. Wash and block garment carefully.

KEY

	K
	m1
	MC
	CC1
	CC2

NOTE

Work CHART in stocking st. (K all rounds).

Read the CHART from the bottom-up and from right to left.

This sweater is worked in the round from the top down, with circular yoke.